

GROW GREEN SERIES 22 WATT

Rapid Growth Spectrum Linear Tube Light



Grow Green Linear Tube Light Benefits:

Energy Savings: Up to 75% less energy than florescent tubes and HPS.

Much Longer lifespan: Titan LED Grow light tubes are rated for 102,000.

Delivered Photon efficiency: A proprietary light spectrum curve that focuses illumination energy that is beneficial to all types of plant growth.

Reduced Heat: Substantial reduction in operational temperatures increases safety and reduces risk of leaf burn. Reduced light source temperatures make overall management of grow area and its operation easier.

Better Yields: Test results have repeatedly shown in this controlled environment (shown right) Grow Green Series delivered better growth rates and Yielded Greener, cleaner, crispier, tastier output than Metal Halide, HPS, or with conventional farming.

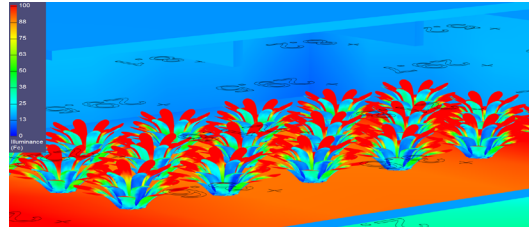
Easily Mountable in various positions: Great for verticle farming or wall mounted illumination. Mount to walls easily using Titans mounting clips. Wall Supplement Lighting can substantially increase lower plant growth especially on taller plants.

Safety: Remote mountable IP66 rated driver delivers Low - Voltage DC output constant current to safely power tube with a locking wire-whip connector.

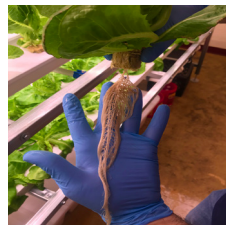


Titan LED Grow Green Series Tube Light Multi Level Hydroponic Testing Stations Shown

Photo-Metric Performace Illustration

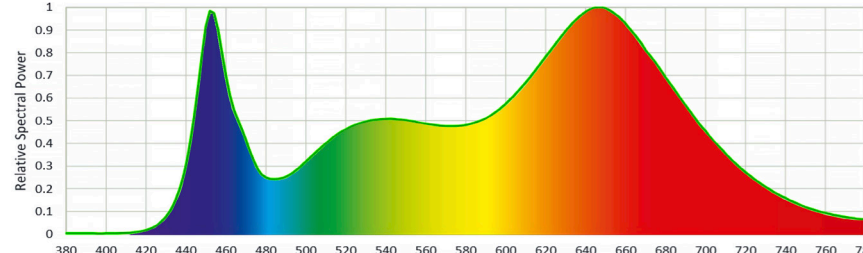


Horizontal Numbers of 29.5 are calculated in PPFd $\mu\text{mol/s}\cdot\text{Sq.m}$ @ 1Ft
Pseudo Illuminance in footcandle shown in vertical left window calculated @ 2Ft



Titan LED ABS Mounting Clips are tough and specifically designed to fit Titan LED U.S. endcap equipped tube lights Only. Simple to install just slip mounting clips over the tubes existing Blue End Caps and secure with a screw to desired location.

TITAN LED LIGHTING SOLUTIONS
317-978-4826



Spectral Analysis Curves of Titan LED's Grow Green Formula

Titan LED engineers have made amazing strides when it comes to traditional LED light output. Continuing in Titan's premium quality only standards, the Grow Green Series required a whole new approach to reach Titan's Tube LED light output design goals. Titan LED's research partners coupled with Titans own multi level testing area's have helped us develop a tested and proven "Real Life Proprietary Formula" that grows green at an incredible rate. By scientifically focusing the color spectrum to fit plant growing requirements, Titan LED is confident the Grow Green Series will help you produce years of great harvest.



Specifications - Light Output

Total Lumen Output: 1,992 lm
Photon Flux: 39.8 $\mu\text{mol/s}$
Efficiency: 1.76 $\mu\text{mol/J}$
CRI: 82
CCT: 3500K
Lighting Angle: 135°
Rated Hours: 102,000

Specifications - Electrical

Voltage Range:	120 - 277V
Voltage	120 V
Frequency	60.0 Hz
Current	0.189 A
Power	22.5 W
Drive Current	640 mA
Power Factor	.99
Luminous Efficacy	244.0 lm/W
	(lm: 400-700nm; W 360 - 830nm)
THD	9.7 %
Voltage	277 V
Frequency	60.0 Hz
Current	0.089 A
Power	22.9 W
Drive Current	640 mA
Power Factor	.92
Luminous Efficacy	244.0 lm/W
	(lm: 400-700nm; W 360 - 830nm)
THD	6.3 %

Specifications - Mechanical

LED Count: 99 Mid Power
Lumileds Luxeon LED top tier Diodes
Dimensions: 47-7/8" L x 1-1/16" W x 3/4" H
Net Weight: 0.9 lbs / 0.4 kg
Ultra Durable, Vibration and Shock Resistant
Polycarbonate Clear Lensing
No Flickering, No Noise
No Hazardous Mercury or Toxic Chemicals
Extruded USA 6063 Aluminum Heat Sink
Over 96 Percent Recyclable
Locking D/C Connector
Proprietary Blue ABS End Caps
Non Conductive Dura Flex ABS Bi-Pins

Driver SKU

17-1CH-DR640-ND



Product SKU

17C-4-99-6-Growlight-HO
17C-T5-99-6-Growlight-HO